

COMPANY PROFILE

OTech CYbersecurity

[Otechcs.com](https://otechcs.com)



COMPANY OVERVIEW

ABOUT US

OTech is an Operational Technologies for cybersecurity service provider. We are a Saudi brand founded in 2023 and headquartered in the Yanbu Industrial city.

OTech is your trusted partner in OT/ICS Cybersecurity, IT/OT integration, Digital Transformation, Industrial Automation, and Operational Data Analytics.

We specialize in serving the critical infrastructures in O&G, MMM, and Power & Water Utilities segments in KSA. We have qualified engineers with global experiences and comprehensive knowledge gained from world-class OEMs, Engineering & Consultancy firms, and EPCs. Our team is certified by ISA/IEC 62443, GIAC, ISO-27001, Cisco, Nozomi, Fortinet, IBM, and Microsoft. Our professional team members help customers to deliver successful innovative solutions and services to drive secure digital transformation.



OTech C.S

COMPANY VISION MISSION



VISION

To be the first service provider in ICS/OT and CS in KSA by 2030.



MISSION

To deliver comprehensive solutions that guarantee system reliability for all.

OTech C.S

COMPANY VALUE



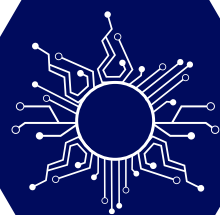
Security

We prioritize the protection of our clients' critical assets and data through industry-leading security practices and technologies.



Creditability

We earn and maintain our clients' trust through our team of highly qualified professionals and adherence to ethical standards.



Reliability

Our solutions ensure the reliability and availability of systems, guarding against downtime and disruptions.

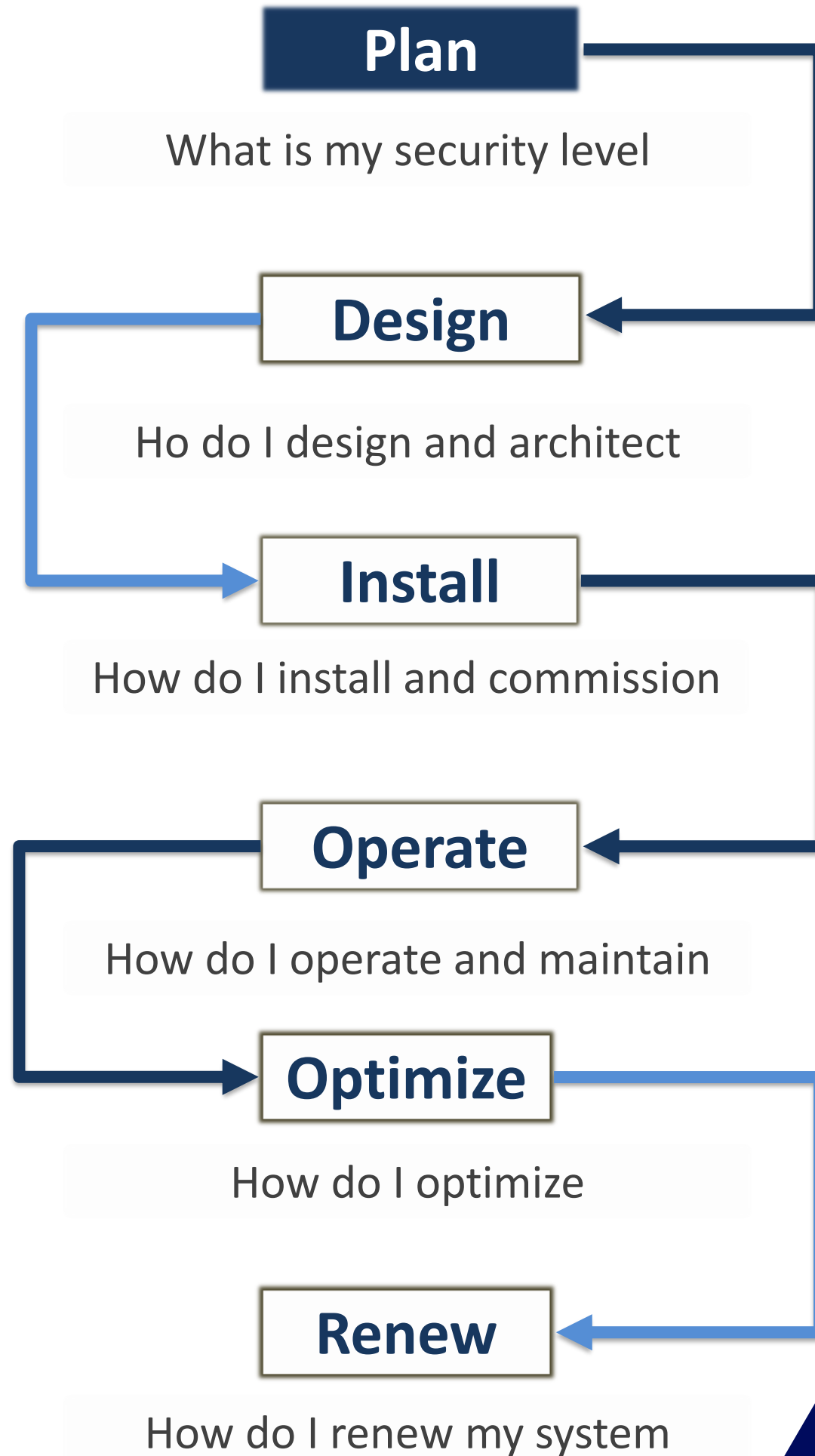


Connectability

We enable secure connectivity and integration between systems, unlocking the value of interconnected infrastructure.

OTech C.S

HOW COMPANY SERVICE WORK





OTech C.S COMPANY SERVICES

1. OT/ICS Cybersecurity

Using the lifecycle model for cybersecurity provides a guide to ensure that security is continually being improved. A security program is not a static assessment or a finished product. Rather it requires constant attention and continual improvement.

- Using the ICS Security Assessments Based on ISA/IEC62443, NERC-CIP, NIST-800-82, ISO27001, NCA-ECC, OTCC, CSCC
- Vulnerability Assessments
- Integrated Security Solutions
- ICS Security Program Review
- System Hardening
- Threat Modeling
- Penetration Testing

OTech C.S COMPANY SERVICES

2. IT/OT Integration

As Industry 4.0 drives businesses towards greater levels of data awareness and automation, operational technology (OT) and information technology (IT) are merging together. The challenge is on for manufacturers to link ageing OT systems with new IT technologies, while also maintaining the highest levels of connectivity and security.

Increase your productivity, quality, and flexibility by successfully integrating OT and IT as part of the digital transformation. You can boost the productivity and sustainability of your production by combining these two areas in a comprehensive and scalable solution.



3. System Integration

- Supervisory Control and Data Acquisition (SCADA)
- Programmable Logic Controllers (PLCs)
- Remote Terminal Units (RTUs)
- Intelligent Electronic Devices (IEDs)
- Protocol Converters / Gateways
- Substation Automation Systems (SAS) / Power System Automation (PSA)
- Data Historian
- Distributed Control Systems (DCS)
- Safety Instrumented Systems (SIS)
- Emergency Shutdown Systems (ESD)
- Variable Frequency Drives (VFDs)



4. Asset Performance Management

- Asset performance management (APM) software monitors assets to identify, diagnose, and prioritize impending equipment problems – continuously and in real time. APM empowers organizations to reduce unscheduled downtime, prevent equipment failure, and reduce maintenance costs while increasing asset utilization, extending equipment life, and identifying underperforming assets.
- APM's applications for Health, Reliability, Strategy, Integrity and Safety can be used independently or together to provide a comprehensive approach to asset and O&M management. APM is available both as a cloud-based service as well as on-premises software.



5. Industrial Internet of Things (IIoT)

Industrial IoT systems are made powerful by connected devices and machines that can speak the same language, monitor and analyze industrial performance data, and allow real-time visibility into what's going right, what's going wrong, and even predictions on when something will go wrong. A connected IIoT ecosystem gives you and your team the power to enhance efficiencies, remotely monitor, benchmark across sites, maximize uptime, optimize operations in factory and field—the potential is limitless.

OTech C.S COMPANY SERVICES

6. Consulting & Training

Comprehensive, world-class training courses teach industrial engineering and operations teams in following domains:

- OT/ICS Cybersecurity
- Industrial Automation and Control Systems
- Asset Performance Management



SEGMENTS WE SERVE



Oil & Gas

In the oil and gas segment, OTech provides cybersecurity services and solutions tailored to the unique challenges faced by the industry. We help protect critical infrastructure, such as refineries, pipelines, and offshore platforms, from cyber threats. Our expertise includes securing operational technologies (OT) systems, ensuring the integrity and availability of data, and maintaining compliance with industry regulations.



Food and Beverage

Offering cybersecurity services tailored to the food and beverage industry. We understand the unique challenges faced by this sector, including ensuring the integrity and safety of food production processes and supply chains. Our solutions help protect manufacturing facilities, distribution centers, and other critical assets against cyber threats, ensuring the integrity and quality of food and beverage products.



Utilities

OTech specializes in providing cybersecurity solutions for power and water utilities. We recognize the critical nature of these infrastructures and the potential impact of cyber attacks on the supply of electricity and water. Our services encompass securing SCADA (Supervisory Control and Data Acquisition) systems, grid infrastructure, and control centers to safeguard against cyber threats and ensure the reliable delivery of essential services.



MMM

OTech offers cybersecurity services specifically designed for the mining, minerals, and metals industry. We understand the importance of securing mining operations, processing plants, and supply chains against cyber risks. Our solutions help mitigate threats to the industrial control systems (ICS) and ensure the safe and uninterrupted operation of mining facilities.

OTech C.S

Tech. Partners & Certifications



CONTACT US

Your satisfaction is our priority.

Reach out to us using the provided communication channels, and our experienced team will be at your service to address your inquiries or provide any necessary support.

 Otechcs.com

 CCC@otechcs.com

 Yanbu, Salamah Center,
4th Floor. Office No. 28.



THANK YOU FOR YOUR ATTENTION

